

ബി ഫോർ

ബിത്ഡിംഗ്

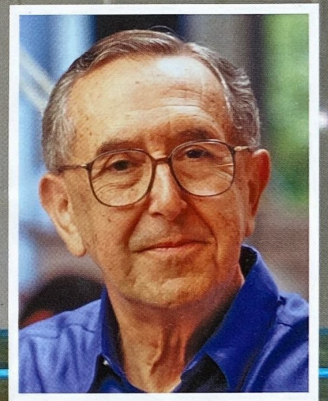
February 2017 ~~50~~ Vol 7 issue 74

International Architecture Magazine

പാർപ്പിടങ്ങളുടെ കഥ

ഗൃഹദോഷത്തിന്
ഉത്തമ പരിഹാരങ്ങൾ

ഹോട്ടൽ
സൺറെസ്
കെമ്പിൻസ്കി



ആർക്കിടെക്ട്

സീസർ പെല്ലി

നാഷണൽ
റെയിൽ മുസിയം

ആകർഷകമായ വീടുകളുടെ
സ്കെച്ചും പ്ലാനും

Nisha and Sajeevan's House



▶ Hall and Prayer area



Architect JAYADEV



The interior treatment of this house started off as an attempt to tame the day light flooding the spaces through the large windows and skylights and yet define light as an element through its variations across the spaces. A deliberate choice of dark colours offset by pastel shades, reflective surfaces and matt textures were used to achieve the same. This also resulted in framing each of the spaces into its own in an otherwise fluid planning which the architecture demanded. Each space has been characterized either by the light which defines it or by the interaction of the surfaces with the light. The primary aim in using the dark shades were to cut off reflective lighting as much as possible and define the direct light through the punctures in the structure as an element in the interiors. The drama of moving shadows on the wall along the stair or the subtle glow into the dining from the verandah is testimony to this. The resultant glow from the sunlight warms up the mood of the entire house during the day-time. Dark Wenge flooring was chosen to finish the floors and tinted wood ceiling was used to treat the ceiling in the corridor spaces which helped in defining the circulation space though it carries various functions along with it, like holding the shelves with the deities and prayer books as well as a study and utility area further down close to the bedrooms. Similar dark tiled flooring was chosen for the bedrooms to create an atmosphere where the bed and its lighting stands out in the rooms being the only important furniture in the entire room. Custom made pendants suspended over the dining space bridges the volumes in height through the ground and first floors also creating an element generating interest in front of a matt and glaze wall finish. A muted brown shade tinged with green was adopted for the wall finish over which the red accents are used as in the triangular bookshelf below the stair or the red painted walls in the kitchen



▶ Open kitchen and dining area



▶ Visiting Room



▶ Reading Area

or in the mood lighting at the end of the corridor. Elements like uruli, bharani etc were used to accessorise the space, the colour of which contrasts well against the dark flooring.

The variations in shades between the floor and the furniture is just enough to define each of it as its own at the same time merges into the overall decor especially the glaze finish on the walls with slight greenish tinges. For the nights, ceiling fixtures light up just enough areas across various volumes rather than a single source flooding the entire space. This creates light pooled around spaces carrying various

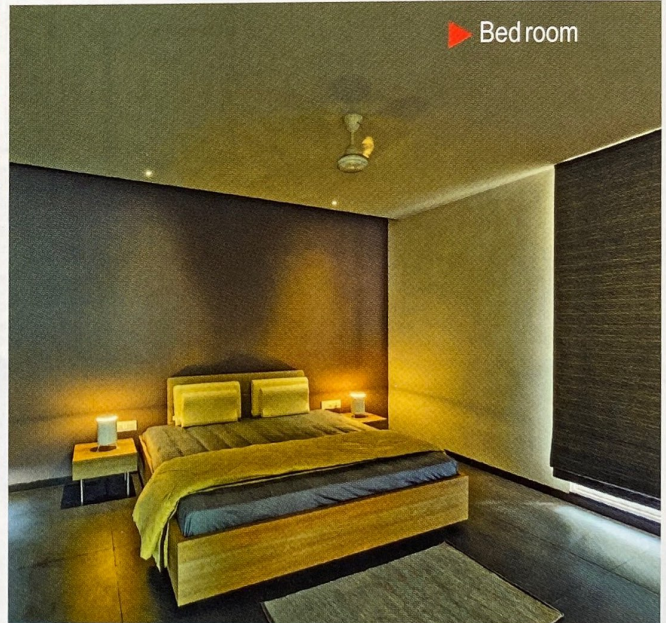
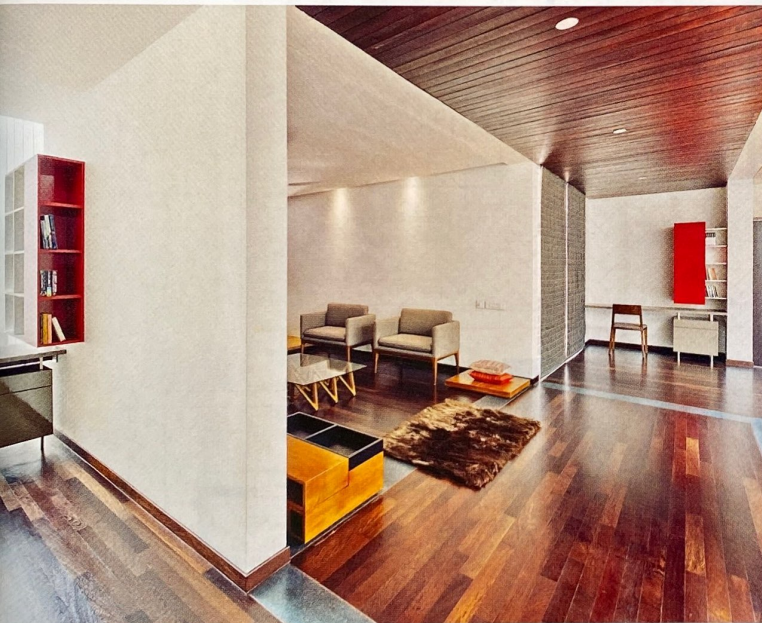
functions like cooking, dining and movement through these areas and the overall ambience is the reflected lighting from these light islands which is just enough for the activities at night. This also ensures that the variations in grain in the wooden flooring is highlighted at exactly the right areas becoming a detail in itself in an otherwise subdued decor strategy. Custom made floor standing fixtures and table lamps were used in living areas as well as bedrooms which helped in creating an exactly desired mood and light patterns on the walls which reflect lighting onto the furniture. 📐



▶ Bed room



▶ Elements like uruli and bharani etc were used to accessorise the space



▶ Bed room



▶ Modern Style bath room