



Ar. Jayadev

A Model of Good Planning and Aesthetics

House of Roy and Sheena

Awards won for Ar. Jayadev's project:

1. Commendation-IIA State Awards 2015
2. Runner Up-IID Design Excellence Award South Zone
3. Winner-Vanitha Veedu Architecture Awards 2016

It is often the case when the propriety of scale within the context becomes the most important aspect when trying to deal with interiors and this was one such project where a huge volume of interlinked spaces, with almost no distinction between the formal and informal living areas, had to be tamed down to a scale which is distinctly homely, warm and welcoming, in terms of the finishes, colour, furniture and lighting. At the same time, it had to withstand everyday rigours of material life in which a user interacts with each of it, and the experience of all this had to be sensorial as much as physical. These were the essence of a requirement that we boiled down, to drive the basic design concepts.

On a muted grey-brown tiled flooring finish, it was decided to locate the significant spatial elements





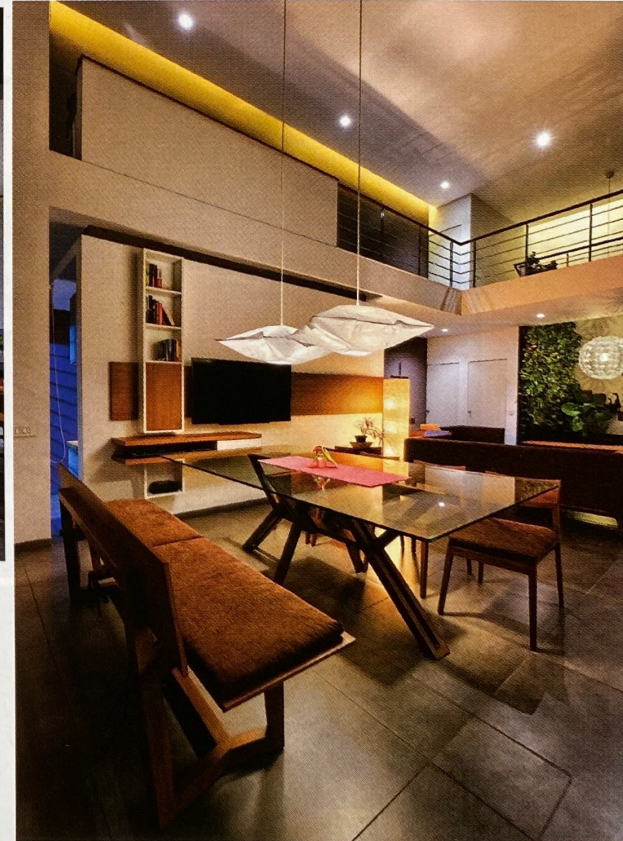
namely the furniture, such that they are distinct with warm teak wood finish and bright fabrics with the texture of solid wood and soft fabrics complementing each other. A finely textured deep brown at certain areas were instrumental in

adding depth and variations to the volume at hand thereby framing the different spaces. Suede fabrics in a similar shade syncs with the floor finishes, while managing to slightly provide accents. A vertical garden with a still pool adjacent to



an open stair brings fresh greens and life to the colour palette, generating interest and balancing the muted tones against the occasional bright fabrics.

Lighting was done with an idea to illuminate specific areas rather than as a whole, and then the reflected light made to fill up the entire volume. The suspended light pillows over the dining table throws a soft illumination over a certain volume before the immediate effects of it fade off into the adjoining lounge which is then lit up with downlights and the bright floor standing lamp adding colour and warmth to it thereby balancing the inherent bluish tint from the neutral warm downlights. Across a space, the variations from lighting are clearly defined which



further breaks down each space within a certain visual scale. The dandelion lamp blends with the vertical garden backdrop, casting shadows on the wall behind the stair and adding a dynamic element to the interiors; as the lamp rotates in breeze, thus the shadows on the wall.

The intended overall effect is a medley of a few experiences physically and hence

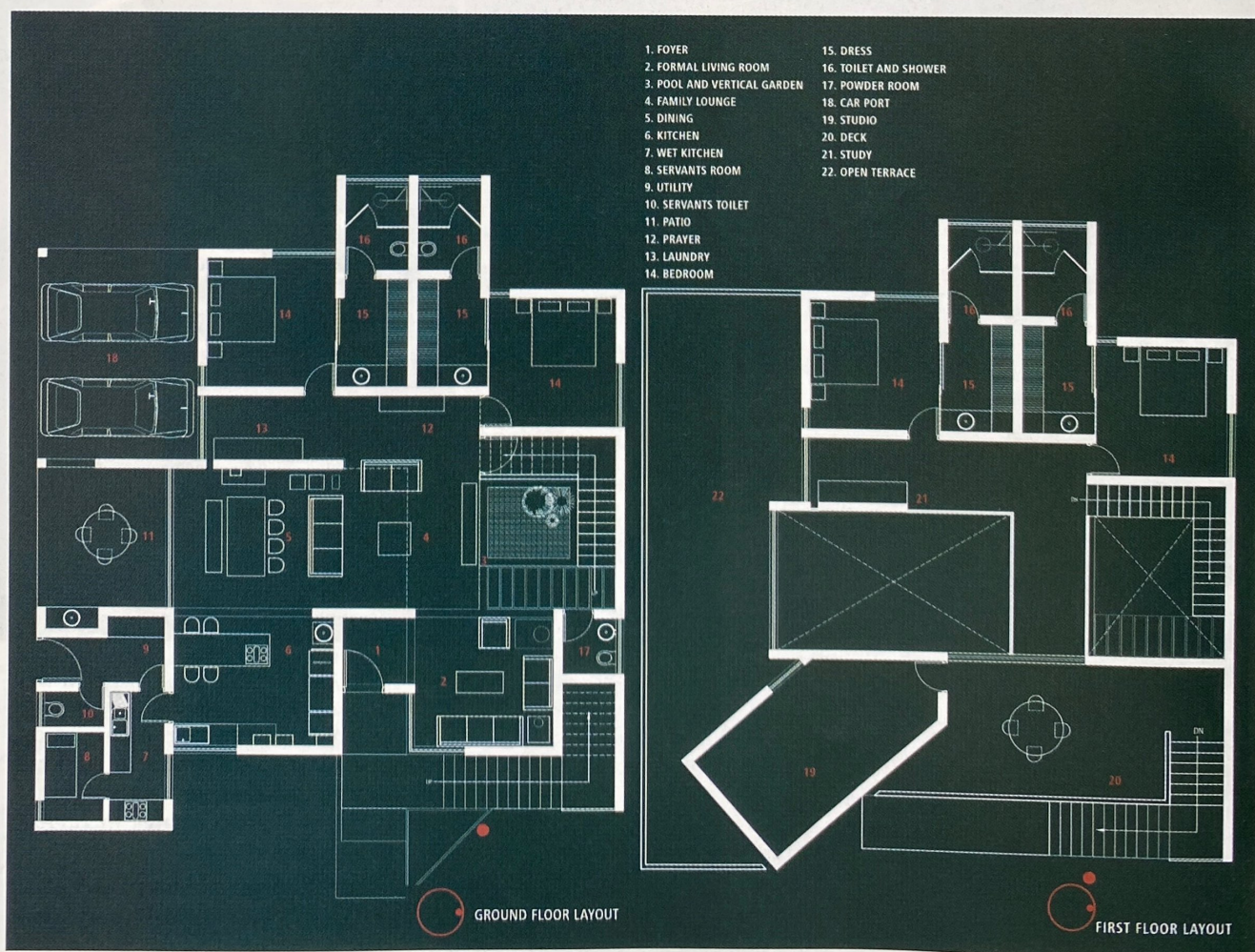




emotionally through colour, gloss and matt tactile surfaces - reflective and playful, sometimes matt and sombre, variations in the lighting levels, the real and perceived differentiation between light and shade and colour tones due to it, the cause of green natu-

ral plants and water inside and its result on the users, the distinction in scale of the living areas - low and high volumes; the taming of it and progression from one to another through the use of certain elements and the whole composition being able to be related to

from one point to another which maintains the essential character of the space due to the original architecture which had strictly adhered to the client brief of having a continuous volume of a space through the formal and informal living areas. 2



B4

ബിത്ഥിംഗ്

July 2016 ₹50 Vol 6 issue 07

International Architecture Magazine

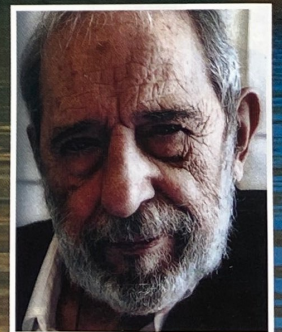
ചരിത്രങ്ങൾ ഉറങ്ങുന്ന
വിക്ടോറിയ
മെമ്മോറിയൽ

വർണ്ണജാലം വിരിക്കുന്ന
ഹോട്ട് സ്പ്രിംഗ് ഹോട്ടൽ

A Model of Good
Planning and
Aesthetics

മദിനയിലെ
മസ്ജിദ്

ഭിത്തിയും ജിജ്ഞാസയും ഉണർത്തിയ
സ്ലീഫൻ കിംഗ്



ആർക്കിടെക്ട്
അൽവരോ സിസാ