

A MACHINE FOR LIVING IN

Text: Ar. JayakrishnanRanjit / Photos: Ar. Jayadev Kesavankutty

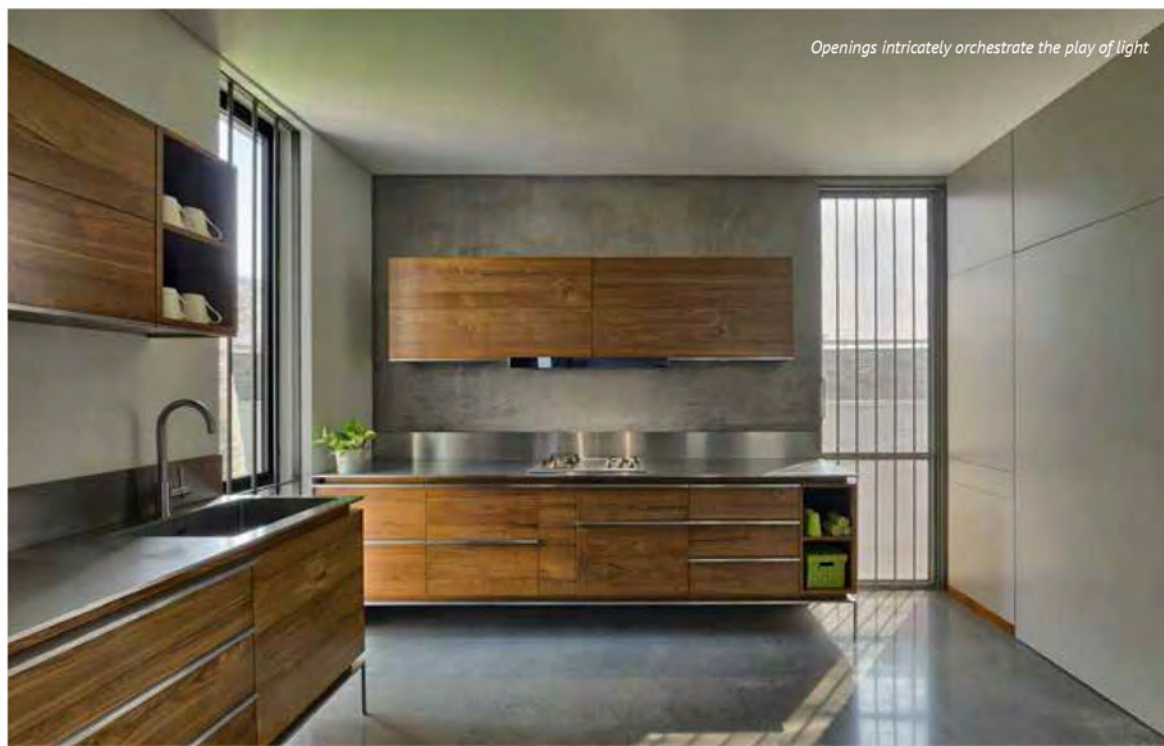
Intelligent living spaces with optimal design characteristics make a space, enriching, ambient and pristine. Forms defining volume and depth dashed with textured finishes and wood floating across neutral palette of materials, blending with steel and white walls strike upon a warm glory envisioned at a serene home in Kochi, Kerala. The subtle frames of life are captured in a captivating environment, owing to an industrial aesthetic resonating in a humble expression.



Minimalism is explored in every element of design

colours define the volume and depth in spaces. Teakwood cabinets and decks add soothing warmth to the rather whole neutral vibe. From the lounge, a staircase leads to the upper levels, where the mid landing opens into a music/movie room, further leading to the bedrooms above. The master bedroom unfolds to the open to sky courtyard, which embraces the warm sunlight echoing a calming devotion. A dash of yellow on certain fixtures and surfaces invite a vibrant fervour further toning down the sterile effects of the steel, white walls and grey concrete floor.

This home does communicate a timeless drama through its simple and clean geometry, eschewing decoration but at the same time being joyous, playful and energetic. The fine details such as suspended light fixtures, tables and pedestal fans which are custom made by the architect add to the fresh decor into tweaking the interior mood. All these elements strike the perfect chord in composing the symphony of life through architecture into this family home.



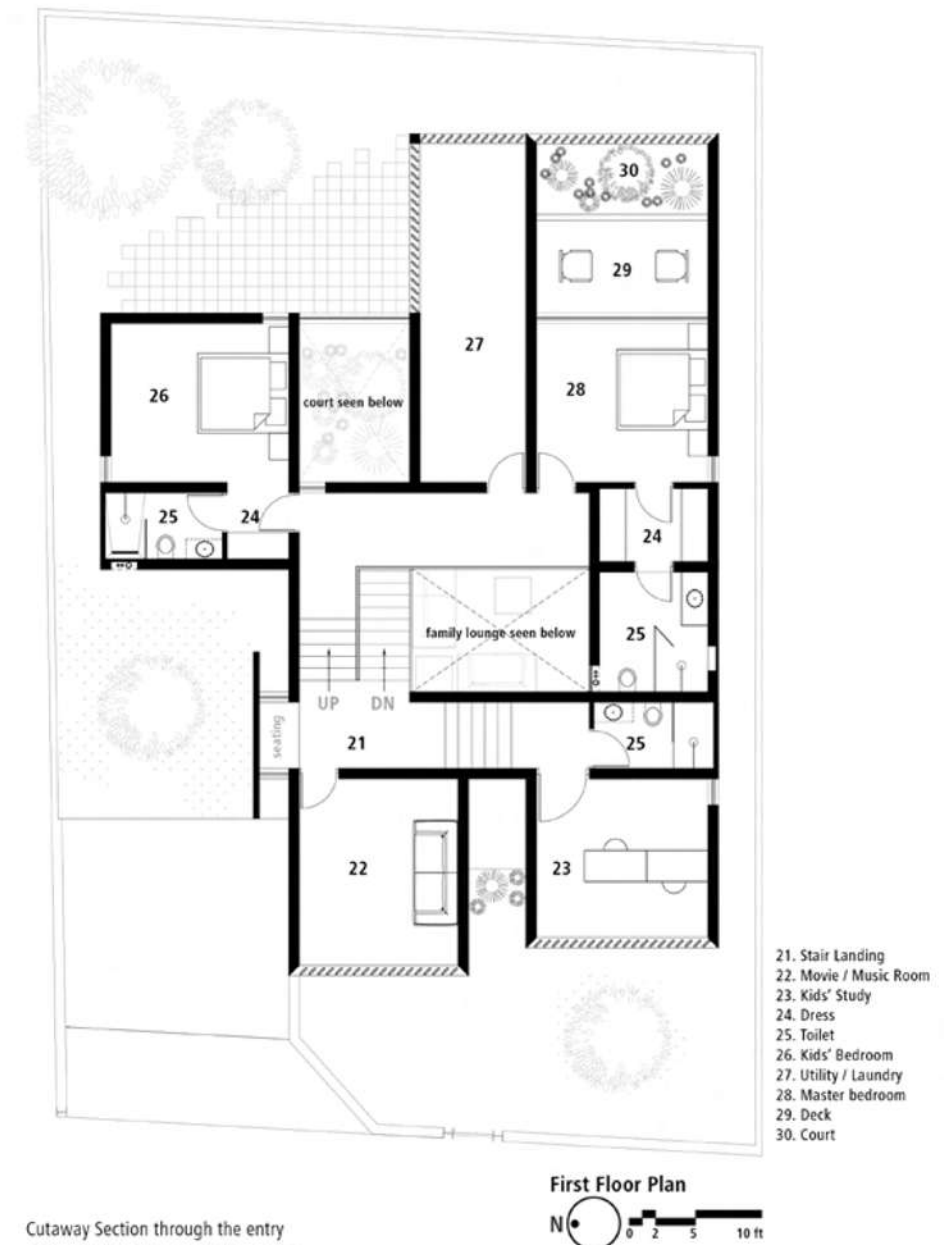
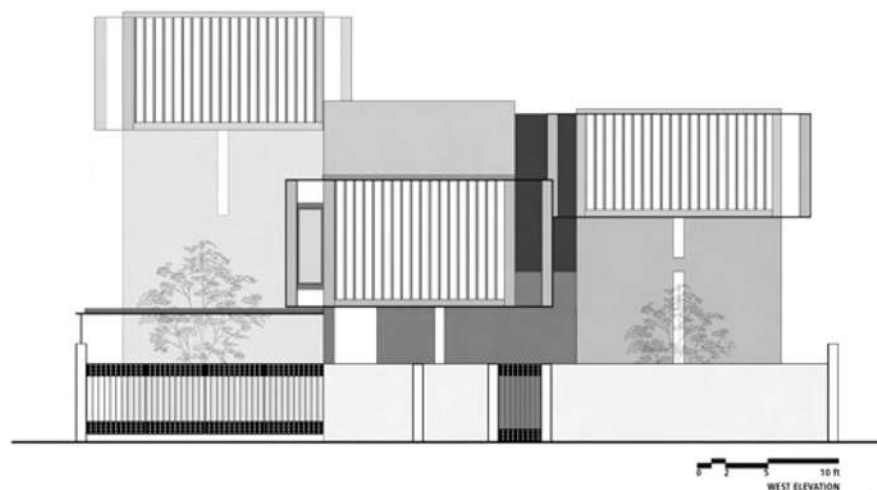
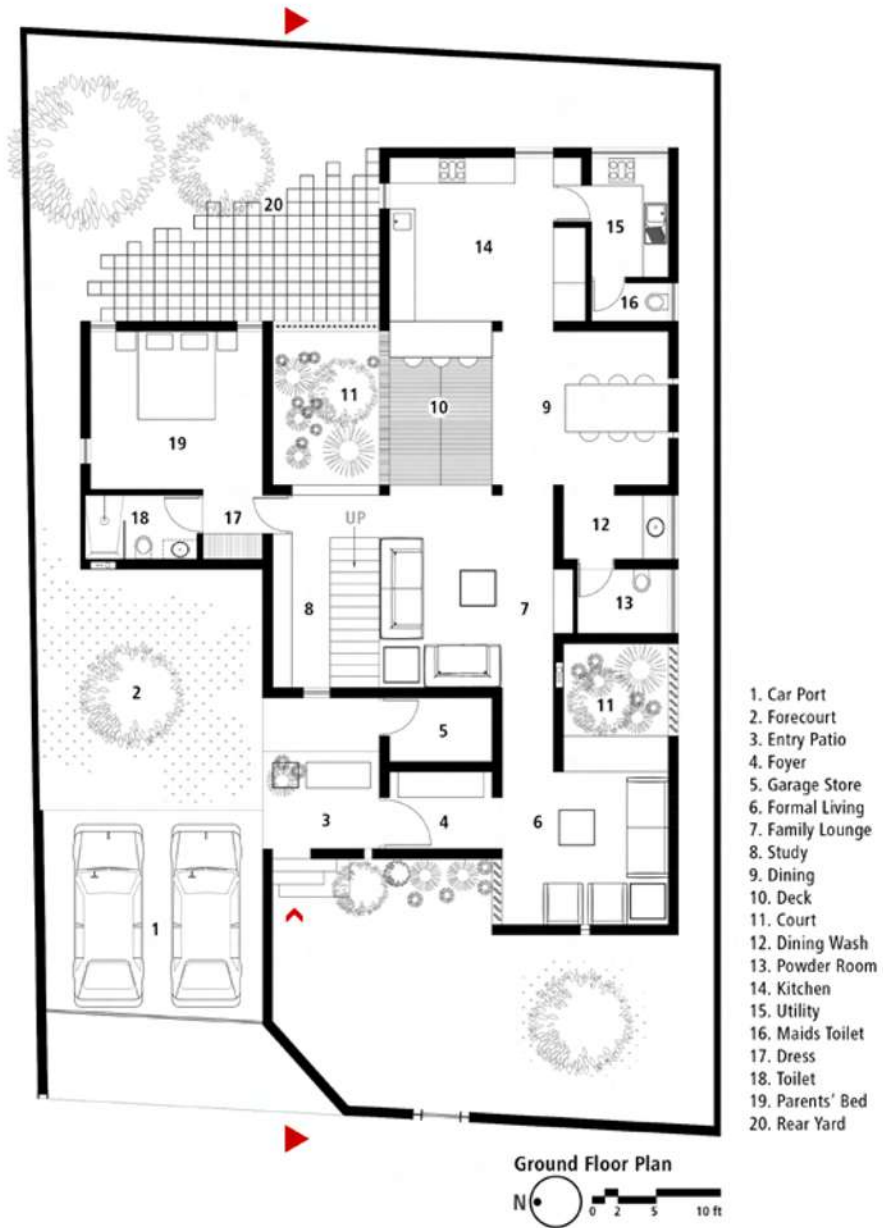
Openings intricately orchestrate the play of light

View from the staircase level

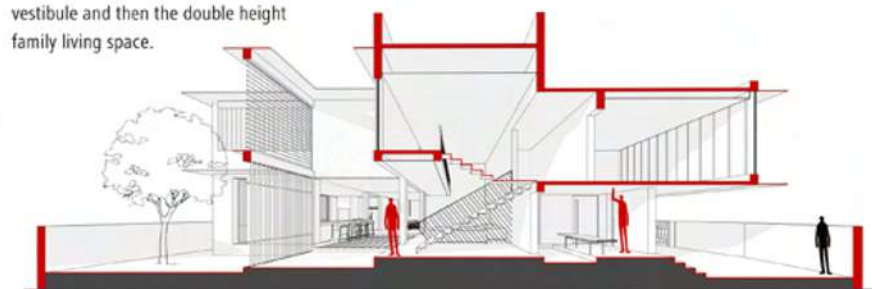


form. The bold composition in the exterior using teak wood and aluminium is derived as a result of the climatic response and industrial character of the region. Upon arrival you are bestowed with a low height cantilevered volume that protrudes out appearing to be defying the laws of gravity, which immediately reduce the scale relative to the expanse of the outdoors, inducing an intimate spark between man and structure. At this level of about 7ft, the scale stretches along the patio and foyer that finally pours into an expansive formal living area. The connecting vestibule further reduces the scale before opening out into the double height family lounge that accentuates our expanding mind with the court, deck and kitchen beyond. This space is the soul centre of the house enhancing the family time graciously enlivening with activities. This volume is defined with purposeful control of scale and lighting which varies from bright to diffused sunlight romancing across the circulation zones. The living areas are linked to courtyards that dazzle with openness integrated with security grills and perforated mesh ensuring incessant flow of air throughout the house. The greens invoke a refreshing aura emanating a blissful emotion inside. Less used spaces are aligned towards the west and south, thus keeping the heat away from the main living areas. Interior walls shine in white paint finish complementing the polished cement concrete floor, while certain textures and





Cutaway Section through the entry patio, study and courtyard depicting the changes and variation in scale as one approaches. Low heights for the entry patio / foyer courtsey the movie room at accessed from the landing level, changing into a standard ceiling height in the formal living room, further reduction in scale through the vestibule and then the double height family living space.





Sharp forms define a crisp aura along with nature



AR. JAYADEV KESAVANKUTTY

JAYADEV ARCHITECTS

Jayadev Architects is an architecture design firm established in 2009, based in Kochi helmed by Ar. Jayadev Kesavankutty. He has worked on a wide array of projects ranging from houses, workplaces and hospitality interiors. Their work is defined to create a sense of place through meticulous selection of materials, orchestration of light to sculpt subtle yet definite forms. Every project is approached with an effort to imagine an atmosphere through built and unbuilt relevant to the context and time, conceiving the user's dreams. The firm believes in spaces that touch upon sensitivities and sensibilities, arrived through experiences, expectation and aspirations that invokes their zeal and passion in design.

FACT FILE

PROJECT TITLE	: ANU & SHANVIN HOUSE
LOCATION	: CHITOOR, KOCHI, KERALA
PRACTICE	: JAYADEV ARCHITECTS
TYPOLGY	: RESIDENCE
ARCHITECT	: JAYADEVKESAVAKUTTY
AREA	: 4000 SQ.FT
YEAR	: 2017
STRUCTURAL CONSULTANT	: STAARC
CONTRACTOR	: G2 CONSTRUCTION
STEEL FABRICATION	: STUDIO VINTON
FLOORING	: SHELL PLATE
CABINETS	: REDHORN FILAMENT COMPANY
LIGHTING	: SPACES

Anu&Shanvin House conceived by Jayadev Architects is a residence that houses a fabrication shop alongside, reflecting the concept of blending work and home into the design. Their challenge was to balance the seamless transition with subtle touches of raw flavour into crafting the atmosphere of a cosy place to live, yet exploring the industrial appearance and enigma.

The massing and volumes represent a game of hierarchy explored through movement and dialogue between man and spaces. The house wraps itself to the western entrance and south with a series of wooden vertical louvers weaved along with aluminium shading sculpting the



Greens breathe an enriching vibe along with the grey and wooden materials



Staircase derives a unique dimension to the living space