



2012 DECEMBER

₹.75

ISSN-0019-4913

THE JOURNAL OF THE INDIAN INSTITUTE OF ARCHITECTS

IIA AWARDS 2012 ISSUE



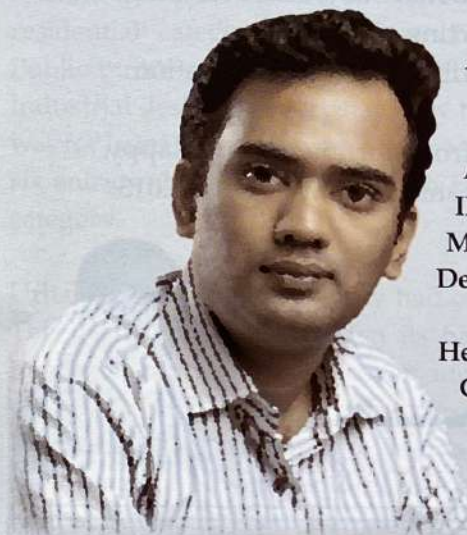
REFEREED JOURNAL OF IIA

VOLUME 77 ISSUE 12

Residence of Nairs

- Petta, Thripunithura, Cochin

- the abode, the refuge, the friend, the origin, the dissolution, the foundation, the substratum, and the imperishable seed sown by a young architect in God's Own Country.



Ar. Jayadev B. Arch.

A Graduate of MES School of Architecture, Kuttipuram, Kerala (2006), Ar. Jayadev worked as Research Associate at Industrial Design Center, IIT Bombay, followed by a stint with M/s. Design Combine Architects & Designers, Cochin.

He also served as a consultant to M/s. Good Earth, Cochin before starting his own practice 'Architecture Tangible' in Cochin, Kerala in the year 2010.

Email: jayadev.architect@gmail.com

3 bedrooms with attached toilets and showers, formal and informal living quarters, dining space, a powder room, kitchen and a utility.

We decided to go for a scheme where the family gets to be together all the while they are home, which happens when the couple returns from their respective jobs and their kid from school. Thus the informal living coupled to a TV lounge, the dining space and the kitchen as conceived as a single volume visually connected with subtle details like a pelmet at lintel level or a band in floor separating the spaces related to different functions.

This volume was connected to the formal living space through a corridor that acts as part foyer and part circulation node with access to a powder room as well. A courtyard was formed adjoining the living room and foyer. The bedrooms were

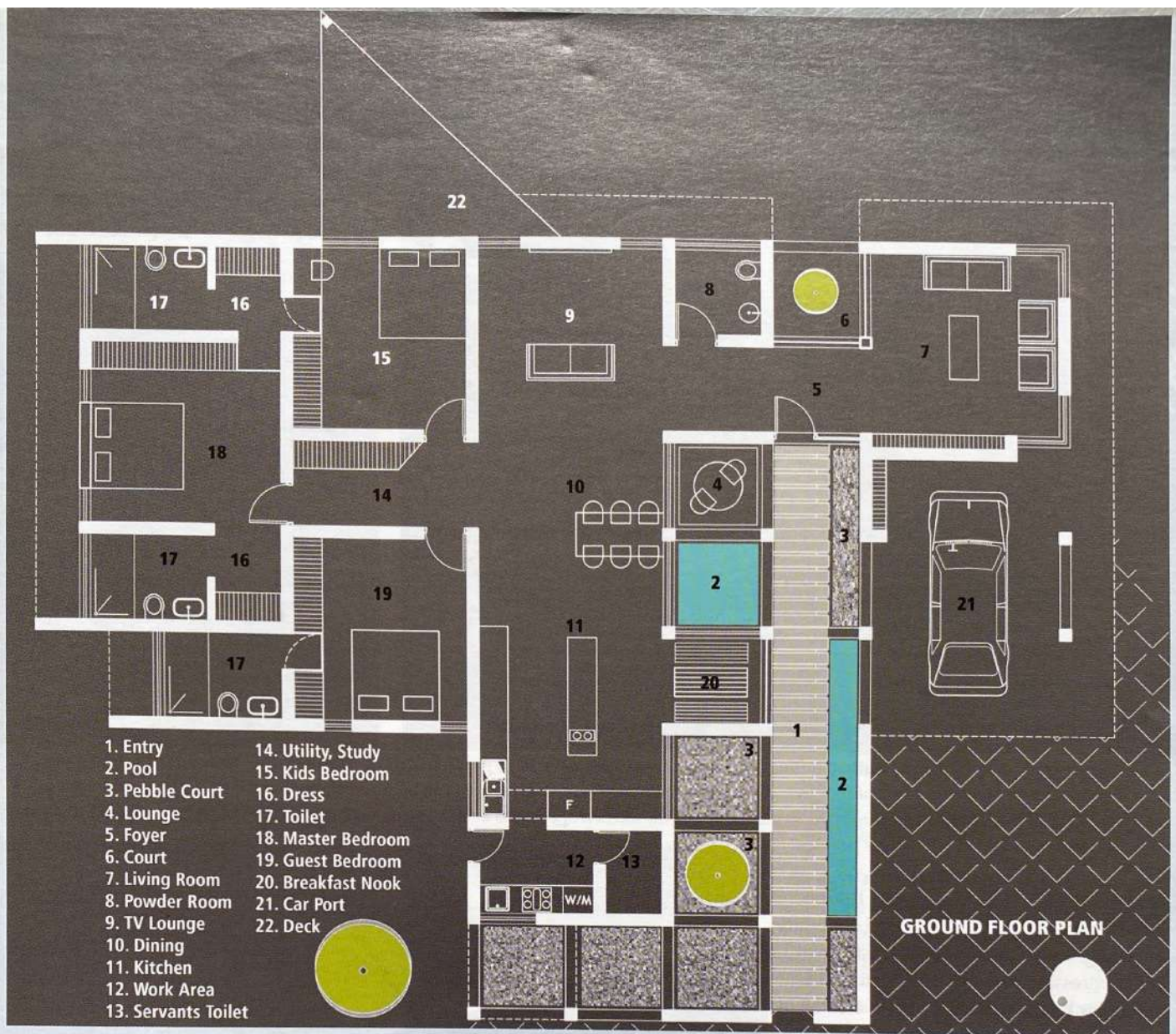
A working couple wanted spaces to call home for themselves and their kid. They had 15 cents of land at Petta, Thripunithura, Cochin. Like all clients they had their own visions of how they wanted their house through the influences they had from around them and their own dreams and aspirations.

After all building a home for oneself is regarded as one chunk of life on earth, a large one at that.

As an architect, my immediate response was to clear them away from the jungle of notions they had and take them to a clean canvas. They were asked to prioritize their requirements and leave it at that rather than going into the architectural connotations of the same.

After all the discussions the requirements were stripped out bare:





Front view of the bungalow: The courtyard, depending on it's location, extends the living room space and provides a versatile outdoor room.





connected to the informal living quarters through a sky lit corridor that acts as a utility as well.

The point of entry to the house was extended over a distance from the



ABOVE: Entry Composition: In urban settings, site constraints often make large gardens & courtyards a luxury. However, this home shows how the elements of contemporary outdoor living - dining, a small pool and lush foliage - can be successfully merged on a diminutive strip of land. **BELOW: The Nook:** Access from the living room and the kitchen opens into a nook clearly visible from the courtyard laid with discarded railway sleepers and filled with white pebbles.

BOTTOM CENTRE: The Living Room: Breaking away from the standard, an white interior gives you an opportunity to create a bold expression of individual tastes. The design embraces the concept of modernism in a clean, elegant fashion using free forms to create visual interest.



main gate along a walkway to create an experience and a sense of belonging. Punctures were created along the left side of the walkway from the informal living spaces that a person moving along it gets glimpses



ABOVE CENTRE : Courtyard with Walkway: Exposed to the elements, this courtyard offers another dimension to urban living.

ABOVE RIGHT: The Deck: In keeping with the structure's clean and simple lines, translucent glass panes wedged in wooden cantilevered frame provides shades to the deck.

BOTTOM RIGHT: Courtyard with walkway - Night view: At night, the rough sleepers laid as steps contrast with the smooth pebbles and the exterior walls, providing a textural richness.



main gate along a walkway to create an experience and a sense of belonging. Punctures were created along the left side of the walkway from the informal living spaces that a person moving along it gets glimpses



ABOVE CENTRE : Courtyard with Walkway: Exposed to the elements, this courtyard offers another dimension to urban living.

ABOVE RIGHT: The Deck: In keeping with the structure's clean and simple lines, translucent glass panes wedged in wooden cantilevered frame provides shades to the deck.

BOTTOM RIGHT: Courtyard with walkway - Night view: At night, the rough sleepers laid as steps contrast with the smooth pebbles and the exterior walls, providing a textural richness.





ABOVE: Dining & Kitchen: The dining table features a top of brown glass to match the kitchen counter-tops and wine cabinet. Recessed lights enhance the shape of the ceiling.

BELOW: Kitchen with a view: A horizontal kitchen with a granite top adds a highlight to the kitchen's colour scheme. A modern and inviting sitting area is created by introducing dark toned wood elements.

of the interiors. We wanted the person to physically belong to the structure and its sense of space through the time he finally enters inside rather than an immediate enclosed shell of a space.

The manifestation of the form occurs through the bare bone columns flanking the walkway and the beams connecting them along with solid





ABOVE: Demarcation of the kitchen and living areas is achieved through this bar cabinet. It also helps push the kitchen's utilitarian elements into the background.

BELOW: Floor tiles used in the living spaces run out under doors giving the impression of extending the indoor living area.



masonry and punctures; that you see the lighter elements supporting the shading devices and roof giving away to solid mass and then you reach the comfort of the interiors.

We had a Ficus tree at the site that we wanted to retain and fuse with the structure visually. This was achieved by framing the tree with the columns and shade slab forming a portal frame. This is the view from the entry towards the left and this becomes the service entry.

The walkway was paved with discarded railway sleepers which contrast with the smooth textured white walls; these are extended over a narrow pool. The gaps between two sleepers are filled with small skin coloured pebbles.

The holes and dents that once used to take the bolts for holding the rails are now filled with pebbles. This is an example of adaptive reuse in terms of material which saved us some cost (we wanted to use treated exterior grade teak wood) though it was not effortless, but the effect is worth it.

Once you enter through the main door, you are treated to the landscaped courtyard which becomes part of the foyer and the formal living room. The Couple is into reading, so we have book shelf in the formal living room, which also acts as a curio shelf.

The corridor connecting the formal living room goes into the informal living areas with the dining and kitchen forming an extension of the same. As mentioned earlier, this helps in giving a feel of togetherness for the family even when each of them are involved in different activities during the short period of time they are together.

The informal living spaces are connected to the bedrooms (3) through a utility space which acts as a study. A cabinet there conceals the DB,

the invertors and other stuff. This corridor is sky lit, with the volume above the ceiling area acting as a ventilation device for the bedrooms. Bedrooms are Spartan.

We have a built in bed which acts as a storage as well. The windows go up from above the side table racks to the ceiling. There are no lintels in this house. All the windows go up till the ceiling which gives a feeling of a large volume. The lighting is also considerable uniform during the day time which gives a soothing feeling.

The silk roman blinds when pulled down acts as a motif on the head board side of the cot. The same pattern is continued over to the Master bedroom. Apart from the dedicated dress areas, we also have wardrobes in white and silver laminate finish inside the bedrooms.

All of it have clean lines and are minimal so as not to intrude into the serene calm visual feeling of the interiors. The doors to the toilets or the dress are integrated into the wardrobe so that they feel like part of the whole.

A similar white and silver finish is employed into the kitchen and dining areas with wood veneer finishes providing a visual break.

Artificial lighting is not at all required during the day time; the interiors are flooded with natural light. At night lighting is taken care of fluorescent tubes or LED light strips concealed way above the wardrobes (inside the bedrooms) and above the kitchen cabinet shelves in the informal living areas. You can also see pelmets in the informal living areas separating the TV lounge and the dining area which give out reflected light.

So these provide two functions, one they divide the space visually but not physically blocking the movement or circulation at the same time provide a visual connectivity. They are pelmets



Master & Guest Bedrooms: Bringing a touch of luxury to the bedroom is an ideal way to enhance a sense of retreat. Here design integrity and ambience through proportion of light flow enhance the over all look and feel of the bed rooms. The background elements hung on the wall help define the ambience. **CENTRE:** The Fig tree introduces a mix of formality and local flavour and is echoed in miniature by the narrow pathway that connects the front and the rear of the home. The combination of rough and smooth creates visual interest and has a pleasant feeling underfoot.

in the corridor connecting the formal living space to the informal living area as well.

Almost all the lighting is reflected lighting in this house except for the floor lamps which accent certain areas. We wanted to create spaces where the couple really wanted to spend time together after their jobs.

This whole idea of being together in the modern day hectic lifestyle which is essential to enrich the family life was the driving force behind developing such a concept and it has worked well.



A Tree symbolizes the Four Boundless Abodes: kindness, compassion, joy, and equanimity with nature. These abodes are the unconditional treasures always available to each of us to nurture, protect and use them sustainably.
-Editor

PROJECT DETAILS

| | |
|------------------|--|
| SITE AREA | - 607 SQ.M. |
| BUILT-UP AREA | - 223 SQ.M. |
| DURATION | - Jan '10 – July '11 |
| PROJECT COST | - ₹.65 Lakhs (inclusive of interiors) |
| Project Managers | - M/s. Good Earth |

BELOW: A large slab of italian marble set in mirror image provides a simple yet striking vanity in the powder room. Creamy walls and glassed partition of the bathing area help highlight both the floor and the walls of the bathroom. **CENTRE:** Visual interest is provided on the wall as well as on the granite top to provide a regal feeling for a mundane task. Drawers made of Bamboo strips help in aerating used laundry stored below.

