

GREY'S ANATOMY

Amidst chaotic city sprawl of Chittoor, Kerala, Ar. Jayadev Kesavankutty of Stirvi
Architecture and Interior Design creates a tranquil oasis in concrete and wood...

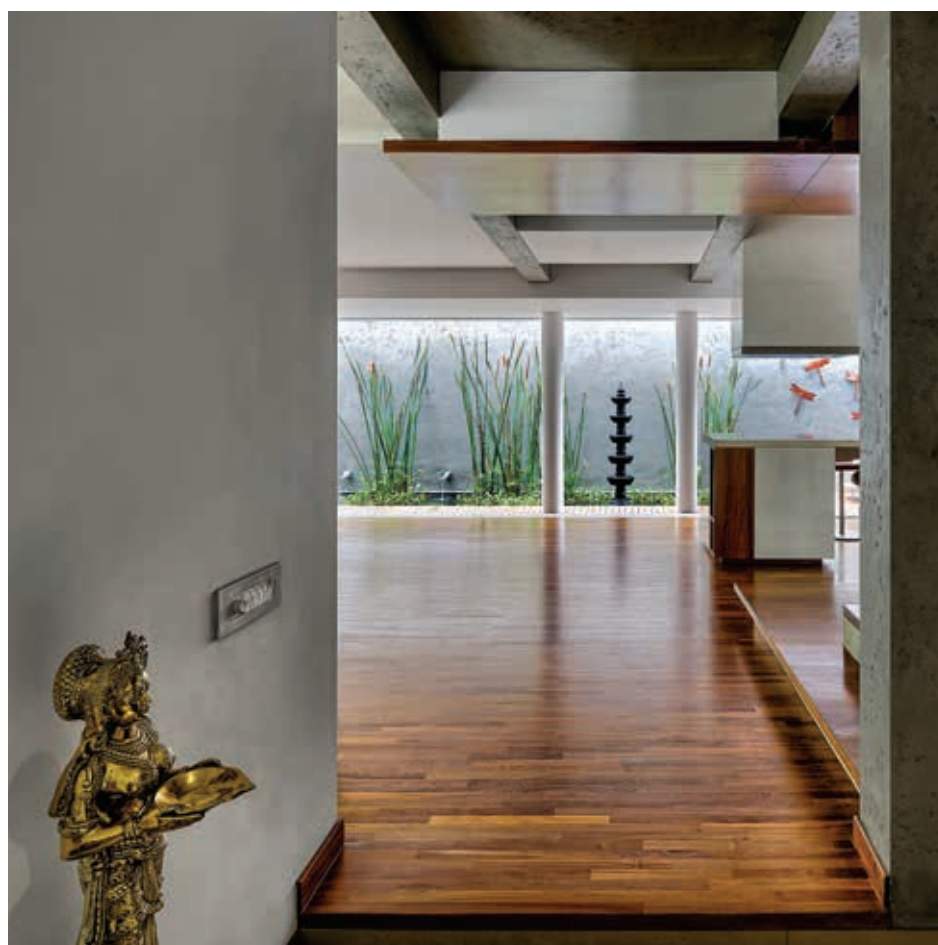


Photography/Jayadev Kesavankutty * Words/Ambica Sharma

HOME PROFILE

THE OWNERS Mini and Sardar Kandathil and their two teen children call this serene space, their home. Apart from going on family holidays, they love to cook, together. When they are all free, and at home, they gravitate towards the kitchen to cook, bake and eat together.

THE PROPERTY Built on 4,500 sq ft, this duplex home is high on privacy. It has three bedrooms, a living room, and a large dining area that shares space with the spacious open kitchen. Both these spaces are hemmed in by an indoor rectangular pond and a deck. The home is dotted with breakout spaces, in the form of tiny gardens.



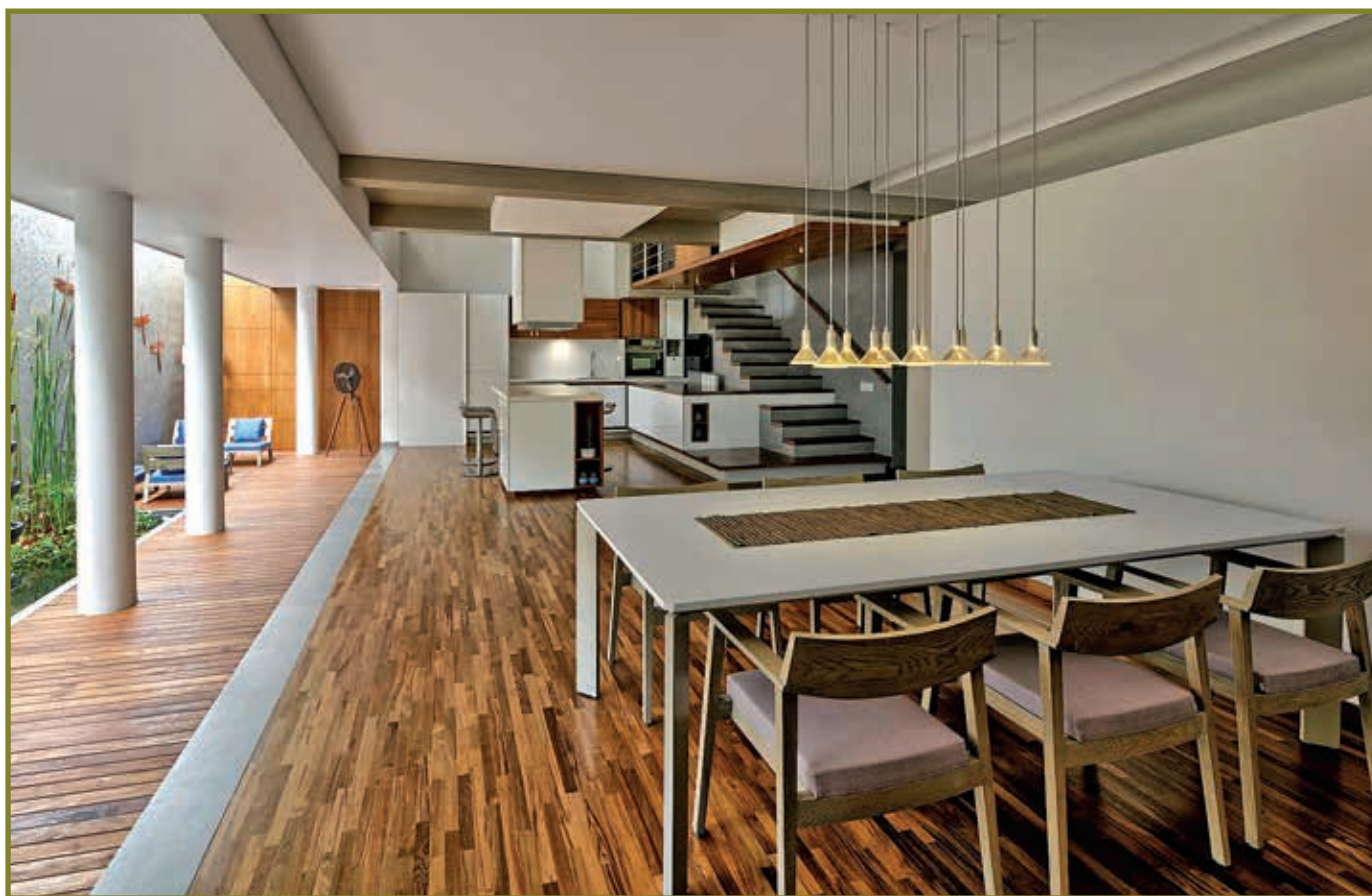
KITCHEN CUM DINING AREA

A large, fuss-free, cool space filled with diffused sunlight, a pool replete flora and fauna, with a deck arranged with loungers, the kitchen-cum-dining area is the family's retreat from the world. It is a leisure space trimmed with green and soaked in mature character moulded from compromise and connectivity. "Their lifestyle dictated the creation of an open kitchen. They have a lot of friends coming over. Mini is big into baking and the family cooks together," says Jayadev.



ENTRANCE

Smart use of simple materials - wood and cement are the stars of the entrance which is protected via a slatted partition from a direct line of sight as well as the sharp southern sun. "The intention was to bring in controlled light and cut-off the visibility from the road," says Jayadev.



A STYLISH GREY AND

white sheath of interspersing boxes hides the capacious interiors of Mini and Sardar Kandathil's home in Chittoor, Kerala. Clever usage of the shortcomings of a narrow, albeit 4,500 sq ft plot, has resulted in inverting the negatives of a shallow plot. All requirements of daylight, cross-ventilation, spaciousness and landscaping were fulfilled by a design that excludes intrusion without adding too many vertical limits. "It is a closely packed urban site. There are homes on either side, a busy road in front and a commercial property at the rear. It is a typical urban scenario," says Ar. Jayadev Kesavankutty of Stirvi Architecture and Interior Design.

In order to turn the home into a haven of serenity, Jayadev, instead of glorifying the entrance, turned it into an unobtrusive, calm and fuss-free, stepped passage, shielded and created by a slatted wood partition. Indoors, the home opens up into cool and spacious areas, dedicated, on the south side to the drawing room, and the guest bedroom, and in the north, to the kitchen and the dining area. These are set in a large interior courtyard-like space, complete with a waterbody. "We opened up the rear yard and incorporated it into the interiors. The house opens up into this space," he says. As a result, despite being closed-off from the bright sunlight, the ground floor receives ample diffused illumination throughout the day, while the high ceiling here helps in dissipating the collected heat. The waterbody, with

its flora and fauna, adds to the surreal experience of disassociating from the chaotic life outside. "The courtyard is my favourite space. It is a calming experience to be relaxing next to the waterbody," says Jayadev. The welcoming space of the kitchen and dining area is where the family spends ample time, and most of it cooking together! "Both my children like to cook, as does my wife, who is into baking, so a lot of time is spent in the kitchen, and on the deck next to the waterbody," says Sardar. Being situated next to the staircase that directs movement of the house, the kitchen becomes all the more central to the character of the home. "The staircase and the kitchen portion had to be combined due to the space constraints. We had to ensure that it didn't look out of place, and be functional," says Jayadev.

Throughout the home, the harsh effect of the southern sunlight has been de-escalated either by phasing out the windows or incorporating them high in the walls. There are louvered shutters, to increase ventilation and decrease heat. Furthermore, on the ground floor, a raised, external courtyard hems the south orienting drawing room as well as the guest bedroom next to it. The raised courtyard not only provides privacy, but also shields the windows from direct sunlight by tucking-in the windows in and away. A similar open, landscaped, sit-out on the first floor, with access to two bedrooms, allows ample light to enter, but protects privacy. Sardar, who is fond of greenery, says, "I wanted to feel like I was staying on the ground floor and that's why I wanted a garden on the first floor. It provides nature at my doorstep, especially when the birds, come for the fruit of the sapota tree."

For a home that is built in the midst of a highly urban expanse, Mini and Sardar's home is a smart, design-led balancing act. It is a harmony of overcoming limits, incorporation of inherent advantages, and preservation well as deployment of nature as per lifestyle needs.

← DINING AREA

Settled in a semi-alcove, the dining table is custom-made, and has cluster lights hanging low, to take the focus off the diners and on to the dinner served. The artificial lighting here is strong enough to create focus, and submit the rest of the space into the background.

↓ KITCHEN

Architectural lines are the interior design elements, right down to chimney and the light tubes coming all the way from the ceiling to just above the kitchen counter. The kitchen is central to the circulation space of this home. Above it, the walkway bridge to the first floor and the galley to the first-floor rooms circumnavigates it. There is an amalgam of off-whites, greys, browns and metallic hues.



STAIRCASE →

A portion of the wood-clad non-cooking kitchen counter runs off to merge with the wood-clad stairs. This works due to the open-plan type of the home, where various spaces have been choreographed into a harmonious one.

BRIDGE TO THE LIVING AREA ↓

Teakwood has been used across the house, and here it is seen leading the way into the family room. A short, arial walkway bridges the gap from the top of the stairs to the family room. Its entrance at the end of the walkway is marked by wood boards on either side, semi-secluding it from sight from the ground level.



The harsh effect of the sunlight has been deescalated either by phasing out the windows or incorporating them high in the walls.



↑ FIRST FLOOR LIVING AREA

The living area, although on the first floor is a partially private space, since it is open on one side. Here, too, an elegant dance plays out between cement and teakwood walls. The focus wall is clad in a veneer in a jigsaw pattern, and turns a corner to hide the inlet into utility areas.

← GROUND FLOOR DECK

Wrapped around the waterbody, the teakwood deck is visually demarcated from the kitchen floor.

Its presence creates spatial dynamics, which heightens the leisure factor of the areas it directly connects too. "If I am not in my bedroom garden, then you will find me here next to the pond," says Sardar.



MASTER BEDROOM

On the first floor, the master bedroom has been closed off from the heat of the south sun, by way of external double walls as well as minimising windows to vertical and horizontal slits. These are just about enough to break the monotony of a blank wall and let in natural light. The main source of daylight is the portal of the landscaped sit-out, that the bedroom opens onto. This break-out space allowed the doorway to be tucked away, not only from direct sunlight, but also for visual privacy.



FIRST FLOOR GARDEN

The greened sit-out is a result of Sardar's desire to live on the first floor and yet not lose out on a garden next to his room. A sapota tree rises up through an oeuvre in the fixed awning. This tree grew to provide the cooling shade and visual splendour it was intended for. The oeuvre meanwhile continues to operate for the purpose it was built for – letting in light and venting hot air trapped in rooms.



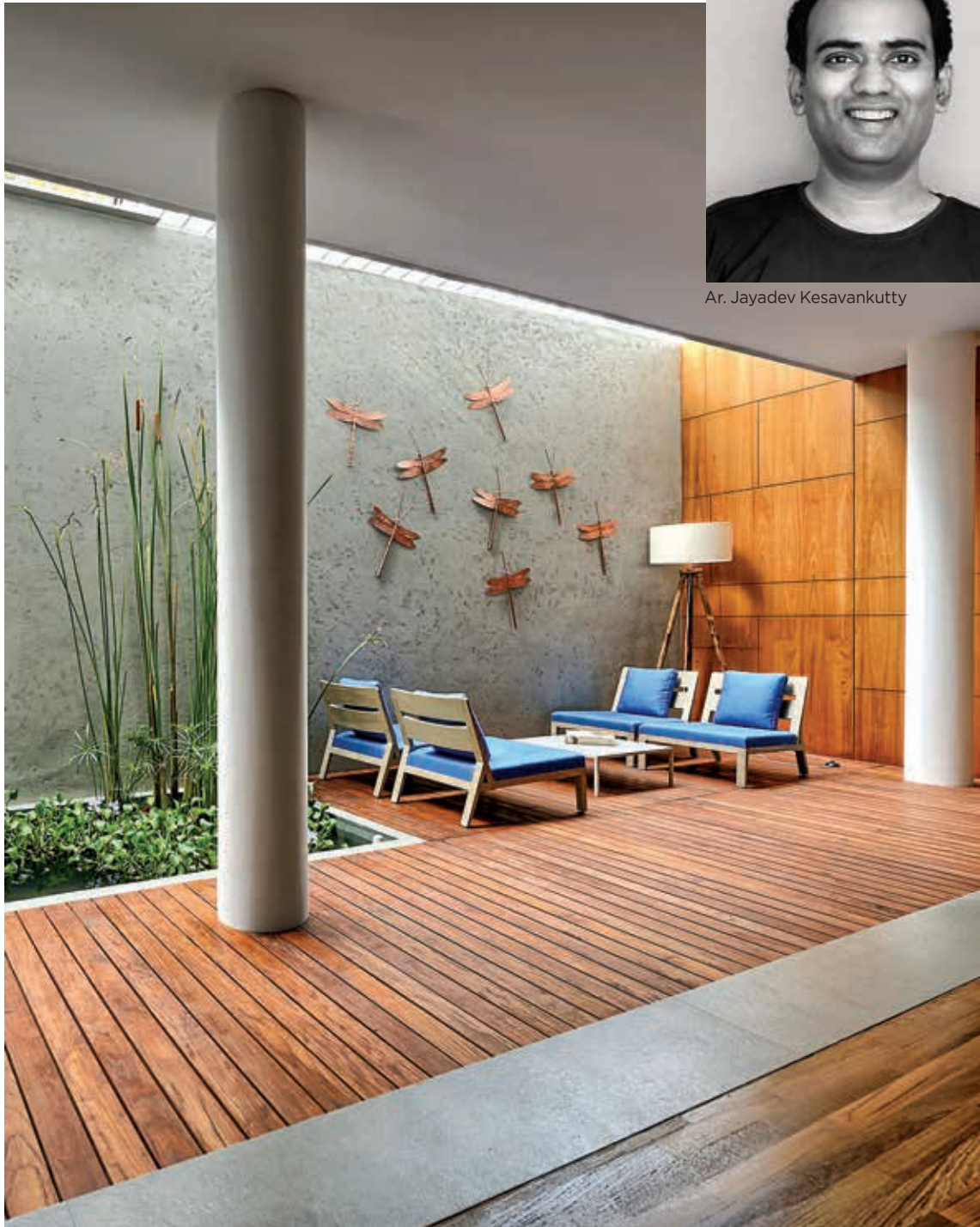
DECK

The sit-out area of the deck is a cosy mini-lounge by itself. Its placement and subtly matched décor separates it from the rest of the areas on this level.





Ar. Jayadev Kesavankutty



This deck is an additional getaway spot within a home that is designed as an oasis from the pandemonium of the world outside.

IDEAS TO STEAL

Concrete and wood make for a wonderful background to earth-shaded furniture...



CLOCKWISE FROM LEFT
Vintage fan, price on request, Wicker World; **pendant light**, ₹8,950, The White Teak Company; **dining table**, ₹1,07,380, Savana Living; **cushion cover**, price on request, Ikea; **bar stool**, price on request, Lapalma; **table lamp**, price on request, FontanaArte; **coffee table**, ₹70,400, Abaca; **sofa**, ₹1,445,400, BoConcept; **storage bin**, ₹790, Ellementary.

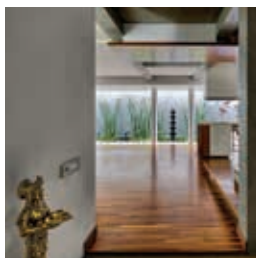
GREY'S ANATOMY

Amidst chaotic city sprawl of Chittoor, Kerala, Ar. Jayadev Kesavankutty of Stirvi Architecture and Interior Design creates a tranquil oasis in concrete and wood...



Photography/Jayadev Kesavankutty Words/Anisha Sharma

HOME PROFILE
 THE OWNERS Hetal and Sankar Karamelli and their two children call this serene space, their home. Apart from getting on better with nature, they want to create a space where they can relax and unwind. The project was completed in 2019 and is a 4,000 sq ft, this duplex home is high on privacy. It has three bedrooms, a living room, and a large dining area that shares space with the spacious open kitchen. Both these spaces are hemmed in by an indoor rectangular pool and a deck. The home is filled with beautiful spaces, in the form of tiny gardens.



KITCHEN CUM DINING AREA

Ar. Jayadev Kesavankutty of Stirvi Architecture and Interior Design creates a tranquil oasis in concrete and wood. The kitchen cum dining area is a perfect blend of the two materials. It features a long wooden table with a concrete top, which is supported by concrete pillars. The area is well-lit with natural light from the large windows. The overall design is minimalist and modern.

ENTRANCE

The entrance is a simple yet elegant design. It features a concrete wall with a wooden door. The floor is made of wood, which adds warmth to the space. The lighting is soft and warm, creating a welcoming atmosphere.



TOP AND ABOVE **Kitchen faucet**, price on request, Kohler; **bed cover**, ₹1,890, Fabindia; **wooden flooring**, price on request, Quick-Step.